





THE HOUSE THAT ART BUILT

ARCHITECTURE: LEWIS GRAEBER III

INTERIOR DESIGN: STAN TOPOL & ASSOCIATES

TEXT: ERIKA HEET

PHOTOGRAPHY: NATHAN KIRKMAN







WHEN ATLANTA-BASED DESIGNER STAN TOPOL'S REPEAT CLIENTS ASKED

him to accompany them on a journey through their favorite neighborhoods in the Mid-South to help them find their new home, he happily obliged. "They took me on a ride to look at different houses," remembers Topol. "Every time they showed me a house, I said, 'I could make this work,' but then one day they drove me by this little long, narrow lot. They couldn't decide what to do, so they asked me what I would do. I said 'Buy the lot.'" So they did.

Their first question to Topol—who assisted the revered New York decorator Billy Baldwin before venturing out on his own in the mid-1970s—was how he was going to fit a house on this awkwardly shaped lot. His solution was simple. "I like houses that don't face the street," says Topol, with whom the couple, for whom privacy was very important, agreed. "And one of the things I've learned from my own house is if you enter from the side, you get more of a house." He and team designer Doyle Garland drew up a plan, the couple signed off, and the time came to find an architect. They called upon Lewis Graeber III, based in Jackson, Mississippi, who helped articulate a layout in which the residents would pass through two elegant courtyards before reaching a pair of French doors leading into a glorious double-height foyer designed to fill with pieces from their incredible collection of modern art. The artful approach begins outside, where a sculpture by Jun Kaneko from Rose Tarlow grounds the entrance courtyard. Underfoot, mixed stone slab pavers from François & Co. in hues ranging from white to slate gray to jet black are arranged in what Topol refers to as a "Mondrian pattern" that continues into the foyer, its stunning details finished by Garland.









TO BALANCE THE DRAMA OF THE ART COLLECTION—WHICH

includes works by Cy Twombly, Helen Frankenthaler, Ed Ruscha, Alexander Calder and Louise Nevelson—Topol introduced a mélange of antiques and chic furnishings. Where it was necessary to customize furniture, Topol, with designer Cynthia Badalamente, called upon experts like Sally Sirkin Lewis of J. Robert Scott and Rose Tarlow Melrose House to specify pieces to his exacting standards. (Topol points out the "delicious" custom benches by the latter in the courtyard.) In an extraordinary display of adaptation, Topol measured his clients' feet when planning the main stairway. "Nothing's worse than not having a step you feel safe on," he notes. That stairway has the benefit of a single standout accompaniment: a bold red, white and black tapestry by Alexander Calder whose sweeping gestures mirror, or rather informed, those of the stair rail. "We built the staircase for it," says Topol, who found the tapestry and many of the home's prized works at Rafael Gallery in New York. "When people do houses, if you start shopping before you build, you know where you can put things. I had a client in Florida who once said, 'Buy everything first, then start the drawings.'" Topol took Graeber's initial idea for the balustrade, flipped it upside down, "then simplified and simplified" until the little nickel metal detail, and the perceived "weight," were at the top. "It really works," says Topol.

Topol treated all the art throughout the house similarly, clearing the way for each work to stand on its own (expertly lit by Garland), but allowing each to meld brilliantly with others. "What I learned from Billy is 'negative space,'" Topol says. "It's not what you hang but what you don't hang around it. Most people don't think in terms of negative space." This is especially effective in the main hall, where a black wood sculpture by Louise Nevelson stands with a large abstract painting by Anthony White and a 3rd century Roman marble lion's head sculptural fragment. The house follows a similar rhythm throughout: In the living room, seating groups gather around *Heaven*, a piece by Ed Ruscha, over the fireplace. Nearby, a colorful abstract painting by Helen Frankenthaler hangs with pieces from J. Robert Scott and Bernd Goeckler. More J. Robert Scott chairs—sized specifically for the host and hostess—decorate the dining room, where Joan Mitchell drawings join a chevron stencil by Kenneth Noland. Of the works, respectively, Topol says: "It was time for a Joan Mitchell experience," and "The Noland is an homage to Paige [Rense], who was married to Kenneth and who was very generous to me when she ran AD. Plus, I'm in love with the piece and we wanted to add color to the room." In one corner, a Coromandel screen that was once part of a group that famously lined the walls of Coco Chanel's Paris apartment adds depth and texture. With this screen comes one of Topol's delightful stories. "Harry Hinson called me to New York and said, 'You have to come to my warehouse,'" Topol remembers. "So I went because he told me to. There, he said, 'I want you to see something. There's a screen that came out of Coco Chanel's home.' When he got something special in, he would always call me."

Where art was not a focal point in the rooms, Topol and Badalamente allowed the furnishings to take over, such as the screen porch's custom mirror from Dennis Leen, its geometric corners mirroring the treatment on the walls of the study. In the kitchen, the London chandelier from Fuse Lighting adds moodiness, joining barstools from John Boone covered in fabric from Jean de Merry. For Topol, sources are not just sources, they are "good friends," and every last detail has a story. This house is a result of those stories. It is also the reflection of a storied career, which took Topol from being what he refers to as "the end of the Baldwin boys" to a highly respected designer in his own right. It is the stories that are carried into the home by each artwork. But it is above all a love story—the tale of a life together. "What I finished," says Topol, "was the dream of this couple." ■ *Stan Topol & Associates, stantopol.com*



















QUIET RIOT (pages 64-73)

INTERIOR DESIGN: Alexandra Loew, 6404 Hollywood Blvd, Suite 205, Los Angeles, CA 90028; 323 498 5790; 37 West 28th Street, 11th Floor TAS, New York, NY 10013; 212 655 3045; alexandraloew.com. **ENTRANCE HALL:** Cloud Shelf by Wendell Castle from Rago Auctions, ragoarts.com; Vienna Secessionist box and 19th-century stoneware from Jason Jacques Gallery, jasonjacques.com; Table and chairs by Josef Hoffmann from Wright auction house, wright20.com; Hervé van der Straeten chandelier from Maison Gerard, maisongerard.com; Art Deco round carpet from Nazmiyal, nazmiyalantiquerugs.com; Museum Walls wallpaper by Donghia, donghia.com. **HALL:** Italian hall chair from Eccola (ma+39), ma39shop.com; chair velvet from Stark, starkcarpet.com; wallpaper from Donghia, donghia.com; customized Edward Fields carpet from Tai Ping, edwardfields.com, houseoftaping.com; flush-mount lights, Orange, Los Angeles, orangefurniture.com. **LIVING ROOM:** photos from the series "High School" by Jona Frank, jonafrank.com; Italian sofa and chairs from Eccola (ma+39), ma39shop.com; fabric on sofa, Old World Weavers, starkcarpet.com; fabric on vintage Albini armchairs and draperies custom designed by Alexandra Loew and hand-screened on Libeco linen, libeco.com; vintage Metafora table by Massimo and Lella Vignelli; vintage drum Stools by Paul Evans; vintage Rispal floor lamps; vintage Meret Oppenheim Traccia table; **DINING ROOM:** vintage Milo Baughman dining table and chairs; flamesfitch chair fabric from Brunswick & Fils, brunswick.com; glazed linen on window treatments from Bergamo, donghia.com; antique Italian Murano chandelier; vintage Paul Evans shelving unit; Scandinavian pottery, Freeforms, freeformsnyc.com; paint from Farrow & Ball, farrow-ball.com. **STUDY:** console from Wright auction house, wright20.com; Italian hall chairs from Eccola (ma+39), ma39shop.com; chair velvet from Stark, starkcarpet.com; Max Laeuger pottery from Jason Jacques Gallery, jasonjacques.com; vintage Italian hall mirror; photo by Telemach Wiesinger, telemach-wiesinger.de; paint and wallpaper from Farrow & Ball, farrow-ball.com. **KITCHEN:** stainless steel cabinets from St. Charles of New York, stcharlesofnewyork.com; Serge Mouille chandelier from Twentieth, twentieth.net; vintage runners from Nazmiyal, nazmiyalantiquerugs.com; sculpture by Pierre le Faguays; wine fridge tower from Sub-Zero, subzero-wolf.com.

SUBSCRIPTION QUESTIONS

phone: 815 732 5287 | fax: 815 732 9889
interiors@pubservice.com



MAKING A SPLASH (pages 74-87)

INTERIOR DESIGN: Marina Zhukova, mzhukova.ru. **STUDY:** wallpaper from Cole & Son, cole-and-son.com; chairs and bench seat fabrics from Jim Thompson, jimthompsonfabrics.com. **LIVING ROOM:** Artwork by Dubossarky & Vinogradov; carpet and side tables from Global Views, globalviews.com; wallpaper from Cole & Son, cole-and-son.com. **DINING ROOM:** painting by Eva Kahn, oilyoil.com; cabinet from Vanguard, vanguardfurniture.com; fabric on vintage chairs (found on eBay) from Designers Guild, designersguild.com; pendant from Arteriors, arteriorshome.com; drapery fabric from Gastón y Daniela, gastonydaniela.com. **KITCHEN:** countertops from Corian, corian.com; chairs artwork by Vladimir Dudkin; wallpaper by Architects Paper, architects-paper.com; faucet from Hansgrohe, hansgrohe-usa.com. **BREAKFAST ROOM:** pendant by Jonathan Adler, jonathanadler.com; drapery fabrics fabrics from Jim Thompson, jimthompsonfabrics.com; cabinet from Vanguard, vanguardfurniture.com; wallpaper from Thibault, thibautdesign.com. **BATHROOM:** pendant from Arteriors, arteriorshome.com; fabric from Thibault, thibautdesign.com; fixtures from Kohler, kohler.com. **MASTER SUITE:** Verner Panton pendant from Verpan, verpan.com; chest from Vanguard, vanguardfurniture.com; bed linens from Artique Couture Home, artique.ru; silk bedcovering from Designers Guild, designersguild.com bedside table from Eichholtz, eichholtz.com.



WELL DRESSED (pages 88-101)

INTERIOR DESIGN: Pierfrancesco Cravel, pfcarchitects.com. **LIVING ROOM:** vintage Gio Ponti chandelier for Arredoluce; brass lamp by Paavo Tynell, paavotynell.org; Japan chairs by Finn Juhl; table by Mogens Lassen; lounge chairs by Otto Schultz. **DINING AREA:** chairs by Arne Hovmand-Olsen; Poul Henningson pendant lamp available from Louis Poulsen, louis Poulsen.com. **KITCHEN:** induction cooktop from Gaggenau, gaggenau.com; faucet from Gessi, gessi.com.



THE HOUSE THAT ART BUILT (pages 102-119)

ARCHITECTURE: Lewis Graeber III, 601 366 3611. **INTERIOR DESIGN:** Stan Topol & Associates, 1100 Spring St NW, Suite 400, Atlanta, GA 30309, 404 885 9889, stantopol.com. **ENTRANCE HALL:** sofa from J. Robert Scott, jrobertscott.com; antique chair from Bernd Goeckler, bgoecklerantiques.com; *Theodoros Stamos* painting from Rafael Gallery, rafaelcontemporary.com; *Henri Matisse* painting from Guy Regal Gallery, guyregaldia.com; Mondrian-style floor from François & Co., francoisandco.com; Robert Indiana Hope sculpture; Biedermeier chest from Iliad, NY, iliad.nyc; chandelier from Paul Ferrante, paulferrante.com; walls upholstered in JF Fabrics, jffabrics.com. **ENTRANCE COURTYARD:** custom bench from Rose Tarlow Melrose House, rosetarlow.com; sculpture by Jun Kaneko, jumkaneko.com; antique English window frame from Architectural Accents, Atlanta, architecturalaccents.com. **HALL:** Louise Nevelson sculpture; 3rd century Roman lion's head sculpture from Paul Kasmin Gallery, paulkasmingallery.com; oil painting by Tony White. **STAIR:** Alexander Calder tapestry from Rafael Gallery, rafaelcontemporary.com. **LIVING ROOM:** *Heaven* by Ed Ruscha, abstract *Helen Frankenthaler* painting and rug from Rafael Gallery, rafaelcontemporary.com; loveseat and sofa from J. Robert Scott, jrobertscott.com; sofa fabric from Cowtan & Tout, cowtan.com; chair from Rose Tarlow Melrose House, rosetarlow.com; chair fabric from Lewis & Wood, lewisandwood.co.uk; Art Deco cabinets from Dragonette, dragonettefurniture.com; stone mantel from François & Co., francoisandco.com; custom demilune table from Iliad, NY, iliad.nyc; John James lamp from Caché, cachecollection.com; wallcovering from Jean de Merry, jeandemerry.com; lounge chairs from chair from Bernd Goeckler, bgoecklerantiques.com; lounge chair fabric from Christopher Hyland, christopherhyland.com; lamps from Richard Shapiro, studiolo.com. **DINING ROOM:** dining chairs from J. Robert Scott, jrobertscott.com; chairs covered in a fabric from Bart Halpern, barthalpern.com; acrylic table base from Spectrum Ltd., spectrum-ltd.com; Kenneth Noland artwork from Pace Prints, paceprints.com; Joan Mitchell drawings from Cheim & Read, cheimread.com; bowls from Micucci, micuccicollection.com. **SCREEN PORCH:** custom mirror from Dennis & Leen, dennisandleen.com; chair and ottoman from McKinnon and Harris, mckinnonharris.com; chair and ottoman fabrics from Fabricut, fabricut.com; club chair from Caperton Collection, capertoncollection.com; Holly Hunt Great Outdoors club chair fabric, hollyhunt.com; drapery fabric from Link, linkoutdoor.com; bronze and limestone table from John Boone, johnbooneinc.com; rug from Perennials, perennialsfabrics.com. **KITCHEN:** London chandelier from Fuse Lighting, fuselighting.com; bar stools from John Boone, johnbooneinc.com; fabric from Jean de Merry, jeandemerry.com. **BEDROOM:** custom coverlet in fabric from Dedar, dedar.com; chest from Iliad, NY, iliad.nyc; stainless steel armoire and bedside tables from Lorin Marsh, lorinmarsh.com; custom rug from Stark, starkcarpet.com. **MASTER BEDROOM:** custom bed by Rose Tarlow Melrose House, rosetarlow.com; French chests from Paul

Ferrante, paulferrante.com; 17th-century stone cherubs from Therien, therienantiques.com; wall and drapery fabrics from Christopher Hyland, christopherhyland.com; rug from Rafael Gallery, rafaelcontemporary.com. **COURTYARD:** custom sconces from Paul Ferrante, paulferrante.com; custom benches from Rose Tarlow Melrose House, rosetarlow.com.

A. Rudin
arudin.com



Berman Rosetti
310 476 6242
bermanrosetti.com



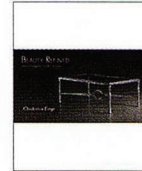
Bernhardt
bernhardt.com



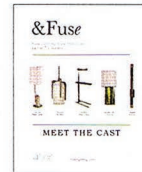
Bright
brightchair.com



Charleston Forge
charlestonforge.com



Fuse Lighting
310 652 2411
fuselighting.com



Hammeron
hammeron.com



Hellman-Chang
hellman-chang.com



John Pomp
johnpomp.com



J. Robert Scott
jrobertscott.com



Kravel
800 648 5728
kravel.com



Kyle Bunting
kylebunting.com



Lee Jofa
leejofa.com



Lee Industries
leeindustries.com



Pedini
pedinusa.com



Powell & Bonnell
416 964 6210
powellandbonnell.com



Tiffany & Co.
800 843 3269
tiffany.com



Vitraform
888 338 5725
vitraform.com



PARTING SHOT



Robert Indiana's 2008 *Hope*, which the artist has called "Love's close relative," rests atop a Biedermeier chest in a house designed by Stan Topol for a couple in the mid South. "My partner and I were in Napa when we accidentally walked by this itty bitty gallery, and the sculpture was sitting on a man's desk," Topol recalls. Hours later, it was on its way to joining the couple's collection. Reflected in the mirror is a painting by Theodoros Stamos from Raphael Fine Art in New York.